



Price excludes: Fencing, Landscaping, Concrete pavers, Planter boxes, Decking

FIXED PRICE

## \$717,355\*

LOT 1424 STOUT STREET  
ROTHWELL ESTATE  
TARNEIT

BELROSE 34  
CHATEAU FACADE

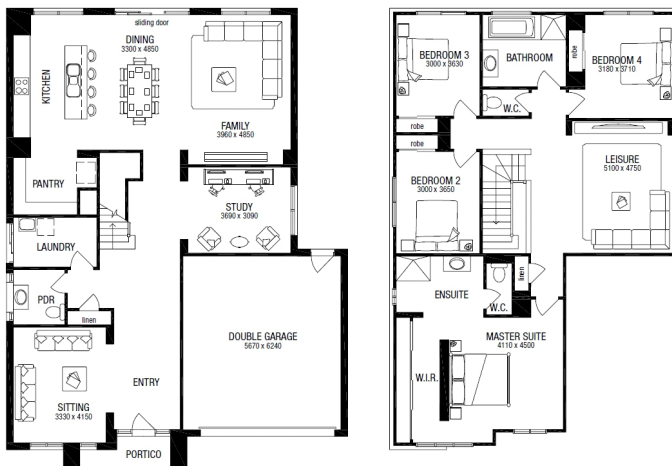
BLOCK SIZE | 504M<sup>2</sup>



### FIXED PRICE PACKAGE INCLUDES:

THE BELROSE 34 WITH CHATEAU FACADE BUILT TO OUR INDUSTRY LEADING BASE SPECIFICATIONS AND LAND, PLUS:

- ✓ Fixed site costs
- ✓ Developer requirements
- ✓ 20mm stone benchtop to Kitchen
- ✓ Large 900mm wide stainless steel appliances
- ✓ Gas ducted heating
- ✓ Feature front render (up to 25m<sup>2</sup>)
- ✓ Concrete driveway and path (up to 35m<sup>2</sup>)
- ✓ Council and developer guidelines
- ✓ Lifetime structural guarantee#
- ✓ Timber laminate flooring to entry, kitchen, family and dining areas (category 1)
- ✓ Ceramic floor tiles to wet areas (category 1)



**More home  
for less.**

**1300 METRICON** |  
[www.metricon.com.au](http://www.metricon.com.au)

**FREEDOM**

**m**  
metricon

\*Image includes upgrade items and may depict fixtures, finishes and features not supplied by Metricon such as landscaping and fencing. Accordingly, any prices in this flyer do not include the supply of those items. Floor plan is a representation of a Traditional façade unless otherwise stated. Metricon reserves the right to alter the images or descriptions without notice. Home & land package prices are correct at time of printing and subject to change without notice. Land prices and availability are subject to change without notice. \$sitecostypetoken\$ Pricing does not include additional legal fees relating to the building and/or land contract and stamp duty charges. All home & land packages are subject to developer approval. VIC Builder's Licence: CDB-U 52967 # For details on our Lifetime structural guarantee visit [metricon.com.au/terms/structuralguarantee](http://metricon.com.au/terms/structuralguarantee). See [metricon.com.au](http://metricon.com.au) for full details of standard inclusions and/or terms and conditions. Package Printed Date: 06/02/2019 Price Region: Greenfields.