

VILLAGES OF Rothwell

Stage 27C · Release ·

This next release will feature 14 lots ranging from 238m² – 527m². Blocks in stage 27C are conveniently located within walking distance of a proposed private and public school, a future sports reserve and a large local park providing easy access to everyday essentials.

ROTHWELL SALES OFFICE

CORNER DOHERTYS & DERRIMUT ROADS
TARNEIT, VIC 3029
OPEN 7 DAYS, 11AM - 5PM

Phone: +61 417 516 937
Email: rothwell@rpmrealestate.com

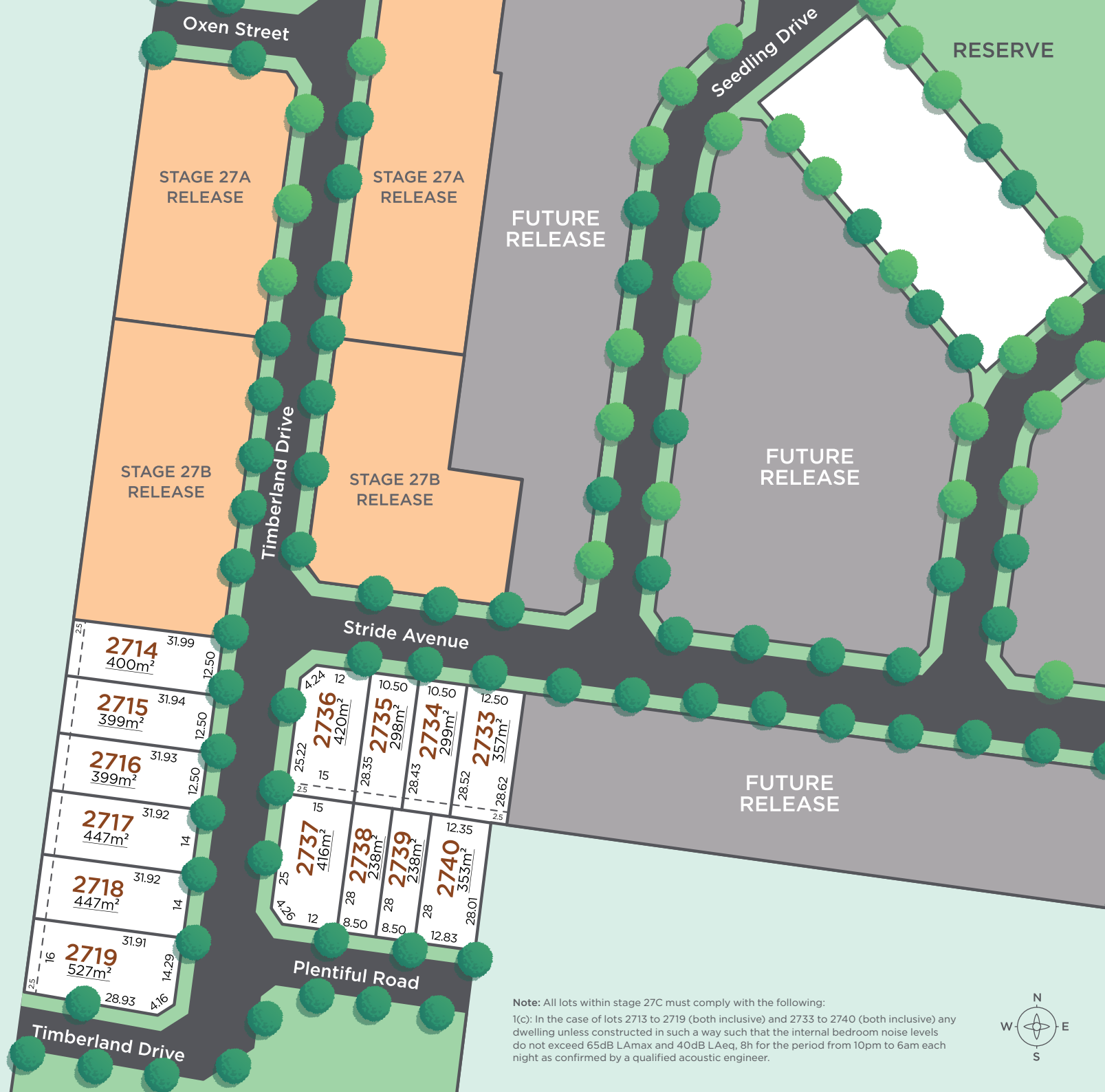
rothwellvillages.com.au

DACLAND / A REAL SENSE OF PLACE



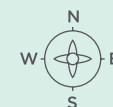
AWARDS FOR
EXCELLENCE
WINNER

Illustrations are indicative only and subject to change at anytime. Refer to the plan of subdivision for further details regarding lot specifications.
This plan is based on a preliminary plan of subdivision and does not include complete detail relating to easements and service locations.



Note: All lots within stage 27C must comply with the following:

1(c): In the case of lots 2713 to 2719 (both inclusive) and 2733 to 2740 (both inclusive) any dwelling unless constructed in such a way such that the internal bedroom noise levels do not exceed 65dB LAmax and 40dB LAeq, 8h for the period from 10pm to 6am each night as confirmed by a qualified acoustic engineer.



VILLAGES OF Rothwell

. Well educated .

Rothwell will be home to two future schools which includes an abundance of open space for kids to enjoy. Two future interactive learning centres will offer residents of all ages opportunities to keep discovering, growing and engaging in education together.

. Well designed .

Walk to the shops, play in the park or enjoy a relaxing wander along the creek. Rothwell is designed with generous amounts of open space and breathtaking parks, gardens and wetlands.

. Well connected .

Rothwell is exceptionally well connected to transport, freeways, services and shops. Walk to future shops, services and the Tarneit train station. Access to the Princes Freeway is just minutes from Rothwell, and Melbourne is just 25 kilometres away.

DACLAND / A REAL SENSE OF PLACE



Illustrations are indicative only and subject to change at anytime. Refer to the plan of subdivision for further details regarding lot specifications.

