



MAPLE 12

FROM **\$402,300***

Lot 2610 (179m²) Stage 26

Timberland Drive



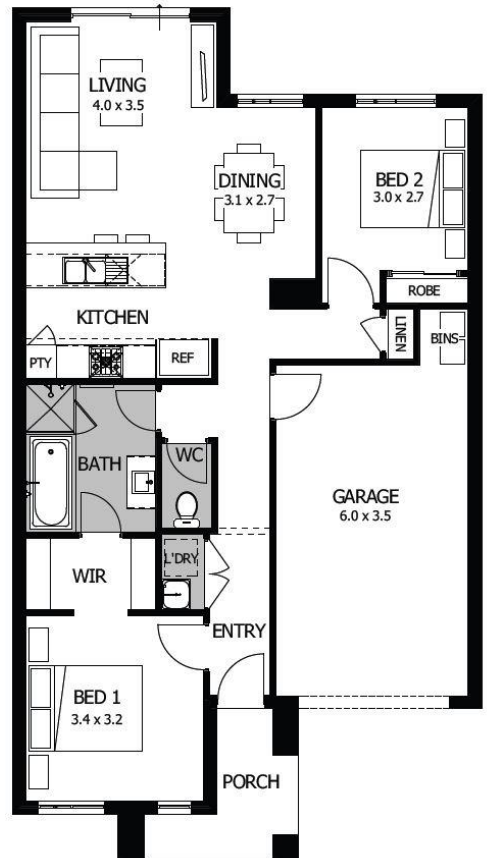
PACKAGE INCLUSIONS

Special Features:

- Modern façade included
- Quality floor coverings throughout
- Stylish blinds & Flyscreens
- Westinghouse stainless steel appliances
- Exposed aggregate driveway
- NBN Connection.
- Recycled Water.
- Sectional garage door with 2 remotes
- 25 year structural guarantee
- 12 month service warranty
- 6 star energy rating

Contact Chris today on +61 417 516 937 or Hayden on +61 499 999 522
 Visit our sales office – open 7 days, 11am to 5pm
 Dohertys Rd, Tarneit, Victoria 3029, Australia
 (200m east of Derrimut Rd on right)
 Email us at rothwell@rpmrealestate.com.au

rothwellvillages.com.au



*The advertised price is based on the builders standard specifications and the advertised inclusions list. The builder and developer reserve the right to amend specification and price without notice. All plans and images are indicative concepts and include features not necessarily supplied by the builder including without limitation façade, furniture, lighting, fencing and landscaping. Building covenants and design guidelines requirements apply to the land. Pricing is correct at the time of the publication, but may change as a result of variations in the inclusions or specifications of the home required by the buyer or due to any other circumstances.