

# VILLAGES OF Rothwell

LIVE WELL. LIVE ROTHWELL.

## House & Land Package



H6 UP – JG King Homes

FROM **\$554,695\***

Lot 2521 (424m<sup>2</sup>) Stage 25

Putters Avenue, Tarneit



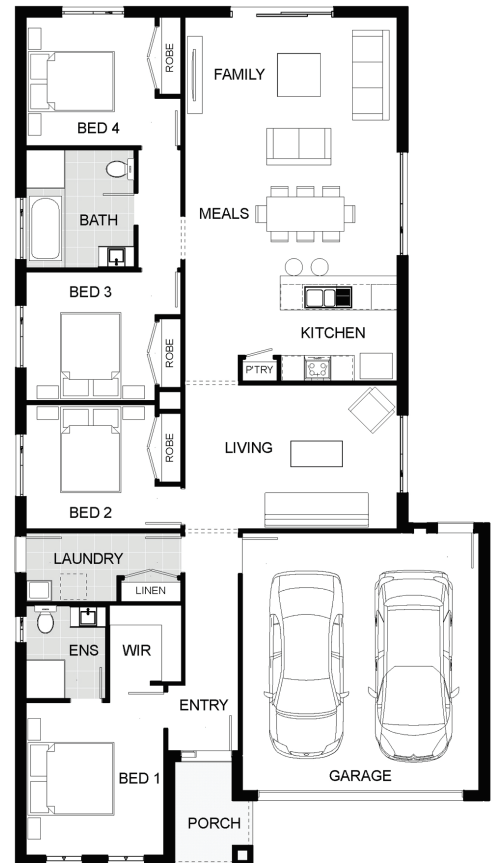
4	2	2

### PACKAGE INCLUSIONS

- ▶▶ Spacious Meals & Family Area
- ▶▶ Stainless Steel 900mm Appliances
- ▶▶ 20mm Essa Stone Benchtops to Kitchen, Ensuite and Bathroom
- ▶▶ Floor Coverings
- ▶▶ 2550mm Ceiling Heights
- ▶▶ Driveway
- ▶▶ 20 LED Downlights
- ▶▶ Solar Hot Water System
- ▶▶ Chrome Finish Leversets
- ▶▶ 7 weeks from deposit to site start\*
- ▶▶ Colorbond Roof
- ▶▶ 6 Star Energy Rating
- ▶▶ Bushfire Attack Level 12.5 Included
- ▶▶ Bluescope Steel House Frame
- ▶▶ 50 Year Structural Guarantee

Contact Chris today on +61 417 516 937 or Hayden on +61 499 999 522  
 Visit our sales office – open 7 days, 11am to 5pm  
 Dohertys Rd, Tarneit, Victoria 3029, Australia  
 (200m east of Derrimut Rd on right)  
 Email us at rothwell@rpmrealestate.com.au

[rothwellvillages.com.au](http://rothwellvillages.com.au)



JG King Pty Ltd (T/A JG King Homes) ABN 21 006  
 627 210 Registered Building Practitioner Licence  
 DBU-2579.

\*The advertised price is based on the builders standard specifications and the advertised inclusions list. The builder and developer reserve the right to amend specification and price without notice. All plans and images are indicative concepts and include features not necessarily supplied by the builder including without limitation façade, furniture, lighting, fencing and landscaping. Building covenants and design guidelines requirements apply to the land. Pricing is correct at the time of the publication, but may change as a result of variations in the inclusions or specifications of the home required by the buyer or due to any other circumstances.

