



Beautiful home in vibrant estate

\$729,900

Lot 1625 Stage 16

(576m²) 18m x 32m



4	2	2

31.9sq

PACKAGE INCLUSIONS

- Quality home built by **Online Homes**
- Ability to customise design to suit specific needs
- All estate design guidelines met
- Fixed site costs included



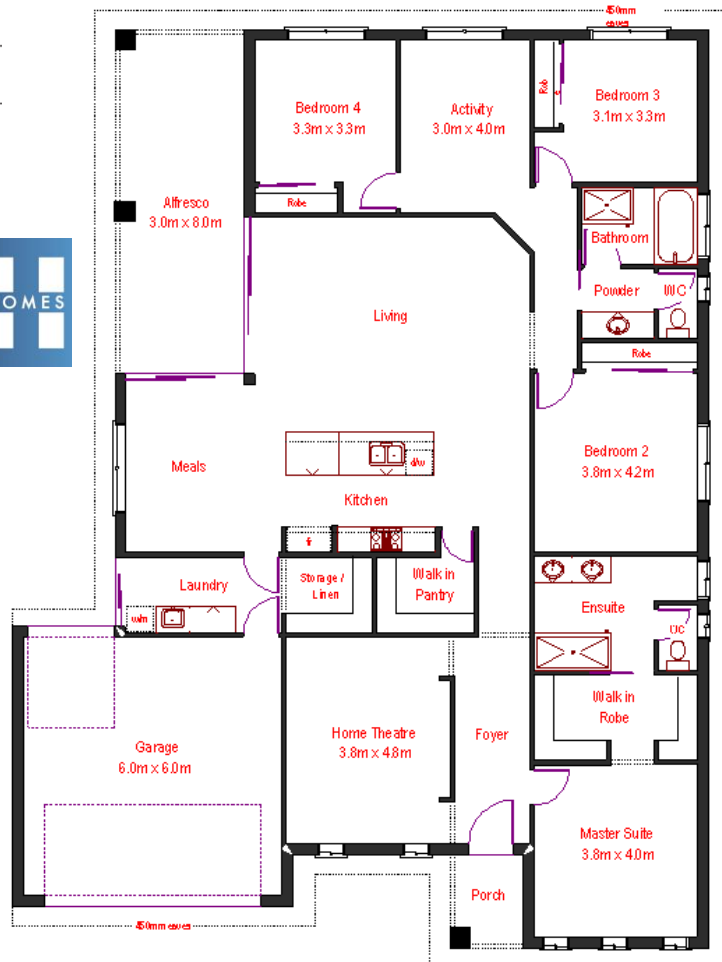
Quality Premium Range inclusions such as:

- Exposed aggregate driveway
- Remote controlled sectional garage door
- 2550mm ceiling heights
- Stone benchtops to kitchen
- Continuous flow gas boosted HWS
- Gas ducted heating including thermostat
- All flooring included
- NBN & Recycled water connections
- 6-star energy rating
- Bushfire upgrades

& so much more ...

Contact **Douglas Blane** today on **0435 510 218** or email douglas@housepresto.com.au to secure this house & land package.

rothwellvillages.com.au



The advertised price is based on the builders standard specifications and the advertised inclusions list. The builder and developer reserve the right to amend specification and price without notice. Site costs are subject to engineer's soil test and contour survey and are excluding rock removal costs. All plans and images are indicative concepts and include features not necessarily supplied by the builder including without limitation façade, furniture, lighting, fencing and landscaping. Building covenants and design guidelines requirements apply to the land. Pricing is correct at the time of the publication, but may change as a result of variations in the inclusions or specifications of the home required by the buyer or due to any other circumstances.