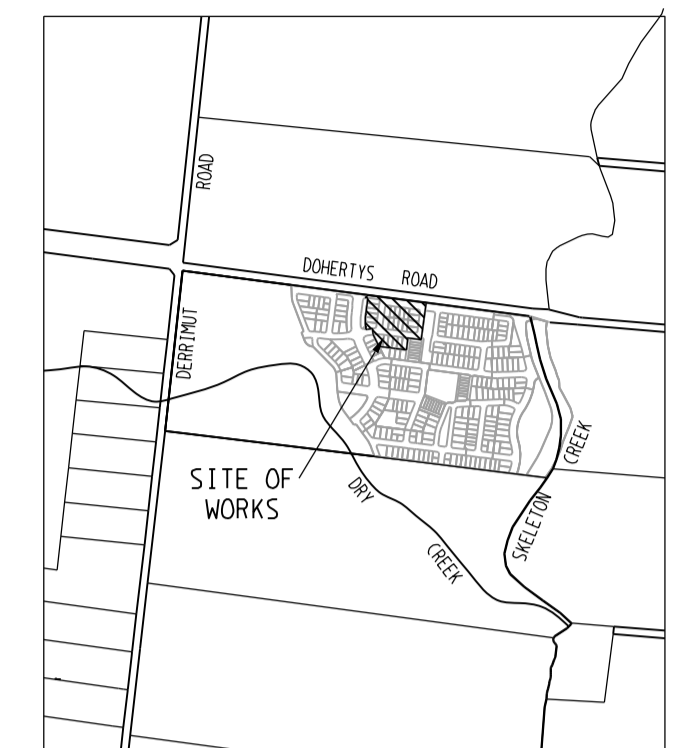


WARNING
BEWARE OF UNDERGROUND SERVICES
THE LOCATIONS OF UNDERGROUND SERVICES ARE APPROXIMATE ONLY AND THEIR EXACT POSITION SHOULD BE PROVEN ON SITE. NO GUARANTEE IS GIVEN THAT ALL EXISTING SERVICES ARE SHOWN.

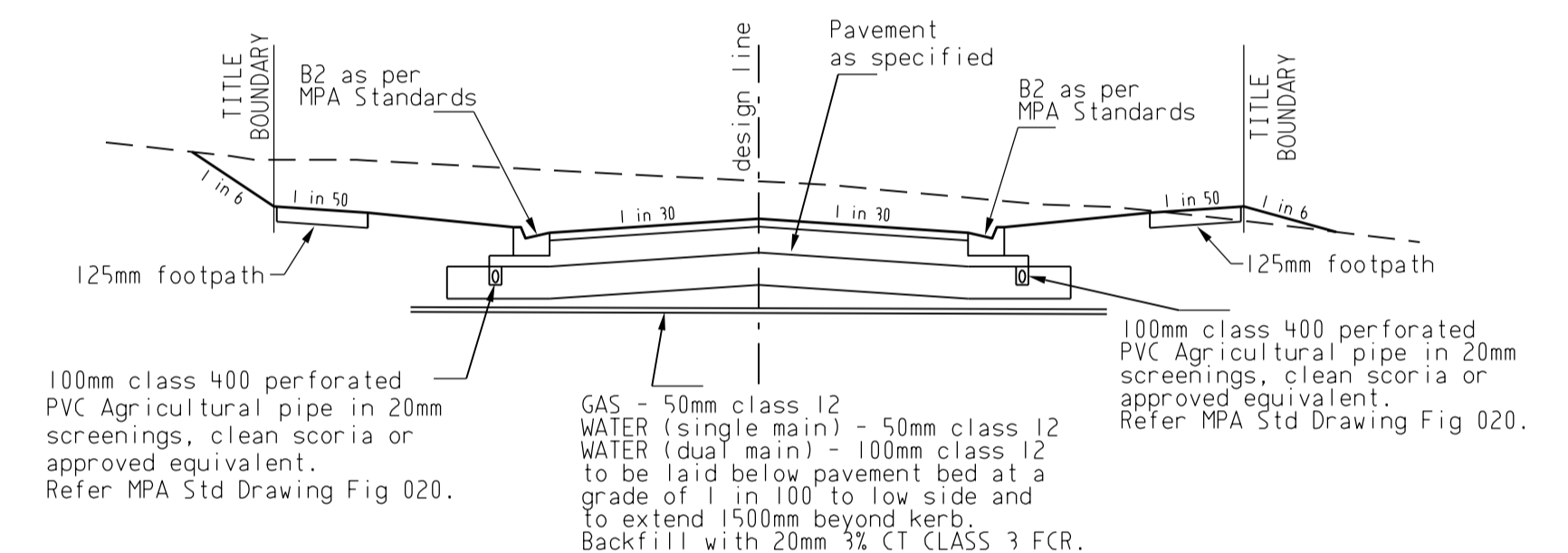
- ATTENTION TO CONTRACTOR**
- IT IS THE CONTRACTORS RESPONSIBILITY TO ENSURE THAT THE DIGITAL PLAN, PROVIDED FOR SETOUT PURPOSES, MATCHES THE TBM COORDINATES SHOWN.
 - Contractor to ensure that the site is pegged and or set out checked by the licenced surveyor responsible for certifying the Plan of Subdivision prior to underground infrastructure being installed.
 - Where concrete works abut a sewer access chamber surround or similar structure, an expansion joint of approved material shall be provided between the two faces.

SIGNAGE LEGEND

- A UNI-DIRECTIONAL CHEVRON SIGNS (D4-1-3)
- B ROAD HUMPS AHEAD SIGN (W3-4A) - CLASS 1
- C SHARED FOOTWAY SIGN (R8-2A) - CLASS 1
- D END SIGN (R7-4A) - CLASS 1

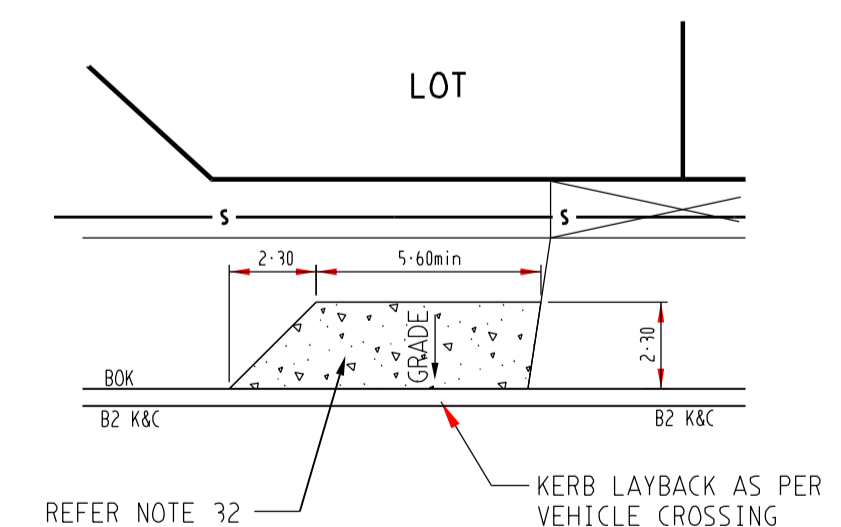


LOCALITY PLAN
SCALE 1:20000

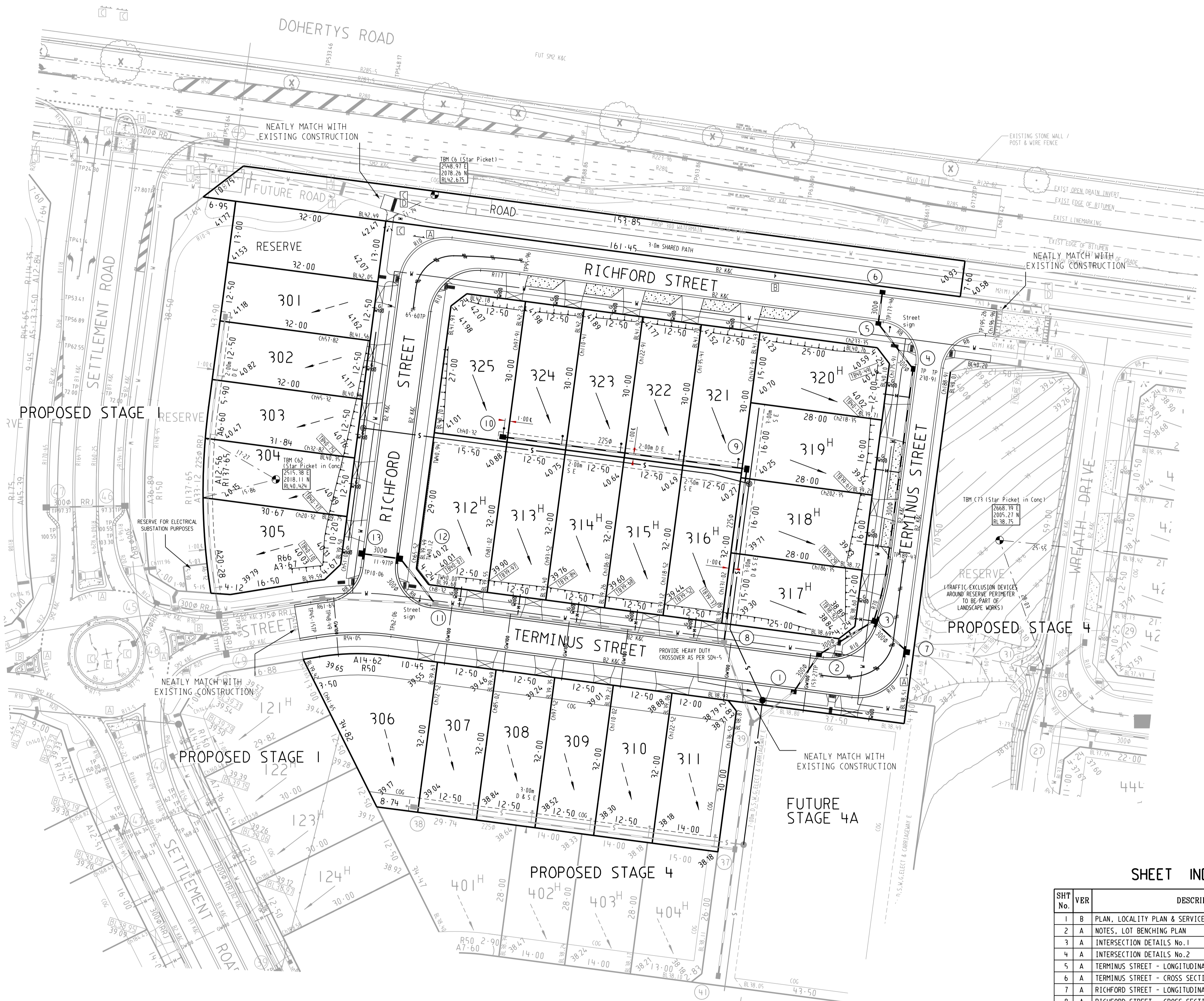


NOTE:
1. REFER CROSS SECTION SHEETS FOR INDIVIDUAL ROAD WIDTHS AND KERB & FOOTPATH OFFSETS.
2. REFER SERVICES SCHEDULE FOR SERVICES OFFSETS.

TYPICAL CROSS SECTION
(nts)



TYPICAL OFF-STREET PARKING DETAIL
(N.T.S.)



PLAN
SCALE 1:500

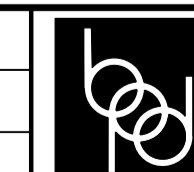
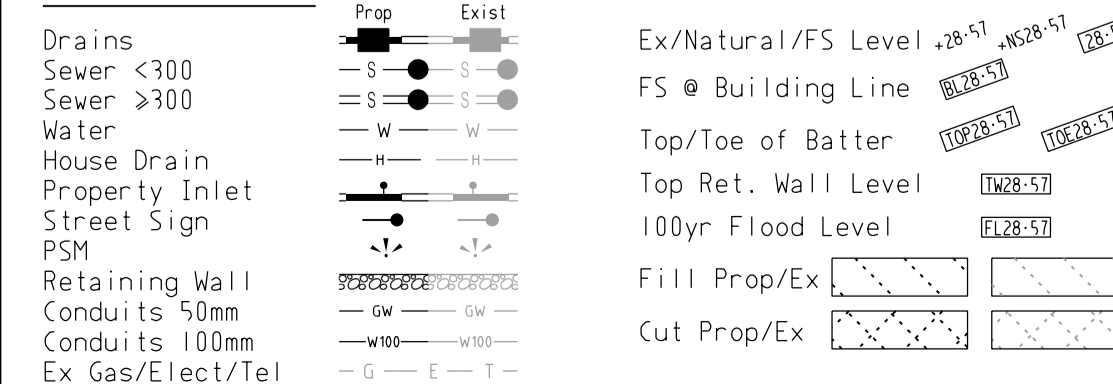
SHEET INDEX

SHT No.	VBR	DESCRIPTION
1	B	PLAN, LOCALITY PLAN & SERVICES SCHEDULE
2	A	NOTES, LOT BENCHING PLAN
3	A	INTERSECTION DETAILS No.1
4	A	INTERSECTION DETAILS No.2
5	A	TERMINUS STREET - LONGITUDINAL SECTION
6	A	TERMINUS STREET - CROSS SECTIONS
7	A	RICHFORD STREET - LONGITUDINAL SECTION
8	A	RICHFORD STREET - CROSS SECTIONS
9	A	DRAINAGE LONGITUDINAL SECTIONS & PIT SCHEDULE

SERVICES OFFSETS AND LOCATIONS

STREET NAME	RD. RESERVE	WATER			ELECTRICITY		FIBRE TO THE HOME		Bk. of KERB	JOINT TRENCHING
		DW	NDW	GAS	CABLES	POLES	FTTH CABLES	FTTH PITS		
RICHFORD STREET (LOTS 321-325)	13.00	2.70S	2.20S	1.70S	0.20N	1.00 BOK	3.55S	3.55S	5.55S/1.65N	W & G
RICHFORD STREET (LOTS 301-305)	16.00	3.20W	2.70W	2.25W	2.60E	1.00 BOK	1.85E	1.85W	4.35W/4.05E	W & G, E & FTTH
TERMINUS STREET (LOTS 317-320)	13.00	2.70W	2.20W	1.70W	3.80W	1.00 BOK	3.20W	3.20W	5.55W/1.65E	W & G, E & FTTH
TERMINUS STREET (LOTS 306-311)	16.00	3.20N	2.70N	2.25N	2.60S	1.00 BOK	1.85S	1.85N	4.35N/4.05S	W & G, E & FTTH

SYMBOL LEGEND



breese pitt dixon pty. ltd.
land surveyors
civil engineers

1/19 cato street
hewthorn east, 3123
telephone 8823 2300
fax no. 8823 2310

MELWAY REF.	359-H-10	MUNICIPALITY	WYNDHAM
SURVEY	BPD	REFERENCE	8584 E/3
DESIGN	NC	SHEET	1 OF 9
DRAWN	NC	DATE	JUL '16
CHECKED		SCALE	AS SHOWN
DATE	12/01/17	DATUM	AHD
REMARKS	BOLLARDS NEXT TO RESERVES REMOVED FROM PLAN, TRAFFIC EXCLUSION DEVICE NOTE ADDED TO RES.		
DATE	12/10/16	REMARKS	ISSUED FOR CONSTRUCTION