

# VILLAGES OF Rothwell

LIVE WELL. LIVE ROTHWELL.

## House & Land Package



Carlisle Homes Bayview 19

FROM **\$481,500\***

Lot 511 (336m<sup>2</sup>) Stage 5

13 Briggs Way, Tarneit 3029



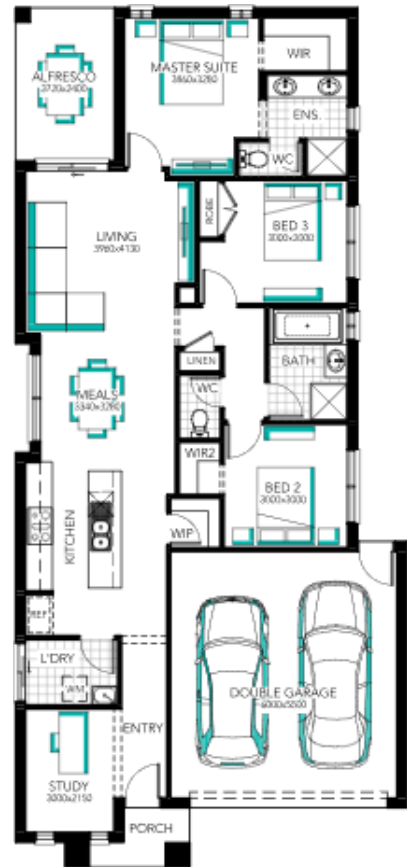
3	2	2

### PACKAGE INCLUSIONS

- TITLED AND READY TO BUILD
- FIXED PRICE SITE COSTS AND CONNECTIONS
- DEVELOPER AND COUNCIL REQUIREMENTS
- FLOORING TO ENTIRE HOME
- 2590MM HIGH CEILINGS TO GROUND FLOOR
- 10 LED DOWN LIGHTS
- 900MM WIDE STAINLESS STEEL UPRIGHT COOKER AND RANGEHOOD
- OVERHEAD CUPBOARDS TO KITCHEN
- SECTIONAL OVERHEAD GARAGE DOOR
- REMOTE CONTROL TO GARAGE DOOR
- BRICKWORK OVER ALL WINDOWS AND
- EXTERNAL DOORS (EXCLUDES GARAGE)
- WINDOW LOCKS TO ALL OPENABLE WINDOWS
- WALK IN ROBES TO MASTER BEDROOM
- UNDERCOVER ALFRESCO
- QUALITY FIXTURES AND FITTINGS THROUGHOUT
- INDEPENDENT QUALITY INSPECTIONS THROUGHOUT THE BUILD PROCESS
- MINIMUM SIX STAR ENERGY EFFICIENCY

Contact Chris today on +61 417 516 937 or Hayden on +61 499 999 522  
 Visit our sales office – open 7 days, 11am to 5pm  
 Corner of Derrimut Rd & Doherty Rd, Tarneit, Victoria 3029, Australia  
 Email us at [rothwell@rpmrealestate.com.au](mailto:rothwell@rpmrealestate.com.au)

[rothwellvillages.com.au](http://rothwellvillages.com.au)



Builder Licence Number: DBU-19009

\*The advertised price is based on the builders standard specifications and the advertised inclusions list. The builder and developer reserve the right to amend specification and price without notice. All plans and images are indicative concepts and include features not necessarily supplied by the builder including without limitation façade, furniture, lighting, fencing and landscaping. Building covenants and design guidelines requirements apply to the land. Pricing is correct at the time of the publication, but may change as a result of variations in the inclusions or specifications of the home required by the buyer or due to any other circumstances.

DACLAND

AWARD WINNING DEVELOPER